



iboxb
Let life be close to nature



Shandong Vision Import and Export Co.,Ltd
Address:707-15, Building A, Haitai Oasis, No. 9377, Minzhu Street,
Weifang Economic Development Zone, Shandong, China
Phone: 0086 133 5675 2448
Email: hello@v-nia.com

01 WELCOME

02 ABOUT US

03 OUR MISSION

04 OUR SERVICES

05 CERTIFICATIONS

01 WELCOME

We sincerely appreciate you taking the time to go through our Corporate profile. This is a great opportunity for us to communicate our services and key competitive strengths to you.

This profile is designed to provide you with a brief introduction to iboxb, and to educate you on our professional capabilities. We look forward to meeting you personally in order to develop a mutually beneficial business relationship.

Since our inception in 2013 China, we have developed a trusted and reliable construction company that has remained committed to proffering high quality shelter solutions to the World in general.

We appreciate your sincere interest in iboxb and we look forward to working with you.

02 ABOUT US

We have the pleasure of introducing the above mentioned company to your reputable organization. IBOXB is a consortium of highly skilled professionals, committed to proffering high quality quick buliding solutions to the CHINA and the WORLD.

More than 10 years of existence as IBOXB,we have successfully demonstrated our ability to understand and implement all kinds of projects to our growing list of clienteles in government & private sectors thus securing an enviable reputation, for unrivaled quality & technically sophisticated structures. Our capabi- lity and expertise in project design, implementation &s management has been evident in the implementation of several completed projects. We have been privileged to handle such as high rise buildings, commercial and residential towers, hotels, schools, hospitals and shopping malls.

We leverage on our strong dedication to superior client service,by listening to the needs of our clients and tailoring our skills to match these needs using the best equipments and the most cost-effective methods in the 21"century.

With our vast experience and excellent track records using innovative building methods, we have positioned ourselves as the ideal shelter solution partner for all residential and commercial projects. We have also retained our commitment to the highest level of ethics, integrity, professionalism & excellence in all pha- ses of our operations.

Our services adds class to our customers and it's also very competitive therefore we solicit your permission to render this quality and dedicated service to your reputable Organization.

Yours faithfully

LEO LIU Principal Partner

03 OUR MISSION

Provide

Fast Construction Solutions



04 OUR SERVICES



DETACHABLE CONTANER HOUSE



FLAT PACK PREFABICATED BUILDING



FOLDABLE PREFABICATED BUILDING



EXPANDABLE MODULAR PREFABICATE BUILDING



LIGHT STEEL FRAME MODULAR PREFABRICATED VILLA



DETACHABLE CONTAINER HOUSE



Steel Framework 1

Main column: fabricated by 80*80 or 100*100 or 120*120 or 150*150 Square Tube, Q235 Steel Surface working.



Ceiling and Floor 3

Ceiling will be gypsum board / PVC ceiling
Floors will be the concrete foundation / plywood / PVC floor leather.



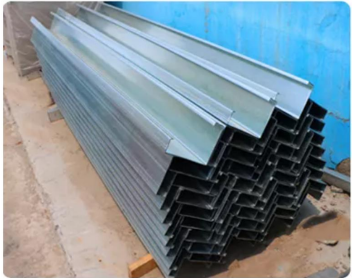
Door 5

Double Side 05 steel pressure Door.
Size:970*2070mm.



Upright Column 2

Made from Q235 steel.
Size: 210*150*2550.



Walls 4

Insulated Steel Sandwich Panel wall.
Panel width: 950mm/1150mm.
Thickness: 50-150mm.
Powder coated color steel coil:0.4mm/0.5mm
Insulation: Polystyrene, Rockwool/
Polyurethane.



Window 6

Hollow plastic sliding window.
Size:930*1200/1130*1100mm.



Advantage:

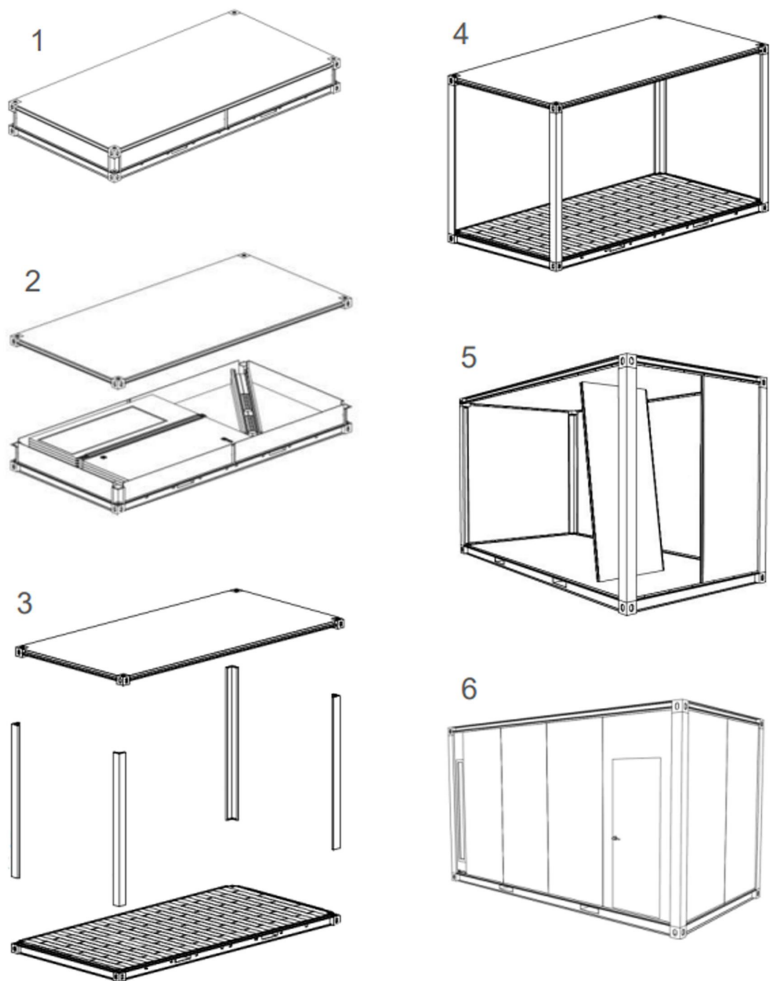
- 1.Delivery in spare parts, save shipping cost(Biggest Advantage)
- 2.Easy for installation, low requirement for worker.
- 3.Flexible combination, can be combined by multiple units creatively, to be larger space.
- 4.Moved and dismantled easily and quickly
- 5.Good waterproof, sound-insulated,heat preservation,environmental protection.
- 6.4 workers + 3 hours = 1 house
- 7.One container room can accommodate 5 beds, believe it will solve your living problems.



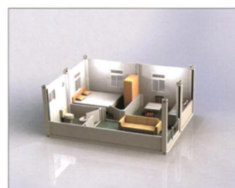
FLAT PACK PREFABICATED BUILDING



ASSEMBLY



3D MAP OF HOUSE FUCTIONS



2 CONTAINER COMBINES



OFFICE ROME



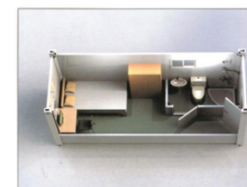
BED ROM



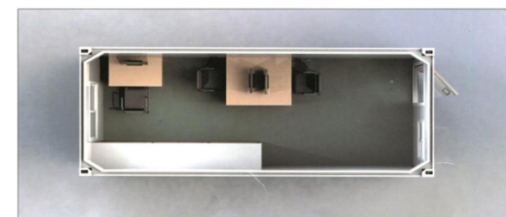
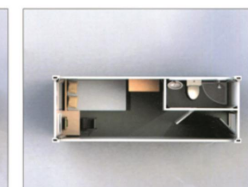
SHOWER ROOM



TOLIET ROOM



BED ROOM



OFFICE ROOM

Advantages:

- 1.Ready for use,without any assemble work.
- 2.Convenient for moving,transporting,water cleaning.
- 3.Service life:30 years
- 4.Good waterproof, sound-insulated,heat preservation,environmental protection.
- 5.The layout is customized design.
- 6.International standard can be put on other shipping container.
- 7.Beautiful appearance,different colors.



FOLDABLE PREFABRICATED BUILDING



1 Hook up



2 Lift up



3 Flip up



4 Set up



4 STEPS 4 MINUTES 1 HOUSE

Styles:

Advantages:

1. Install in 15 mins
2. Remove and assemble fast
3. Multi-scenario application: office/events/
4. New launch in 2022
5. Brand new in global
6. Better in insulation& tightness
7. Folded thousands of times





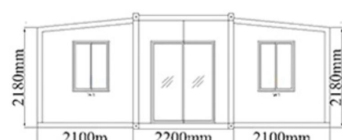
EXPANDABLE MODULA PREFABICATED BUILDING



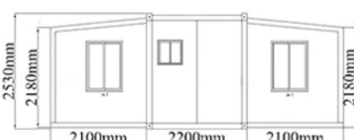
LAQYOUT:



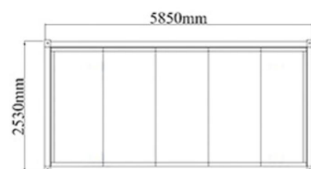
SIZE:



Front Side view



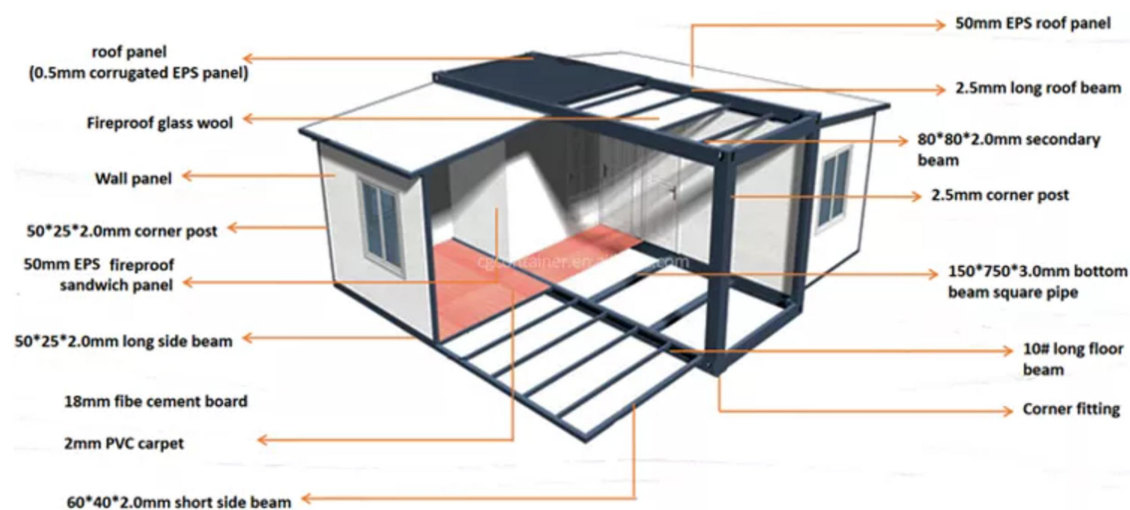
Back Side view



Left Side view



Right Side view

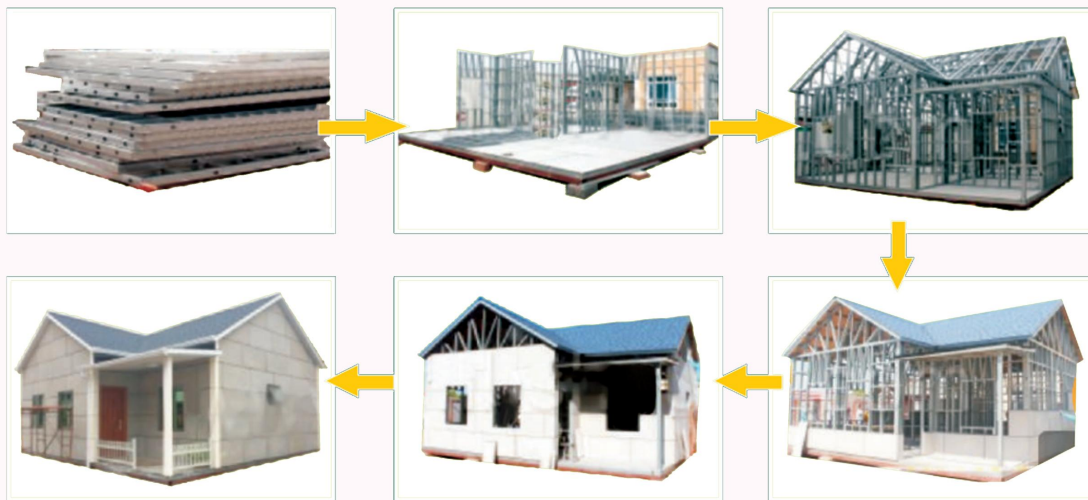




LIGHT STEEL FRAME MODULAR PREFABRICATED VILLA



Flow Chart

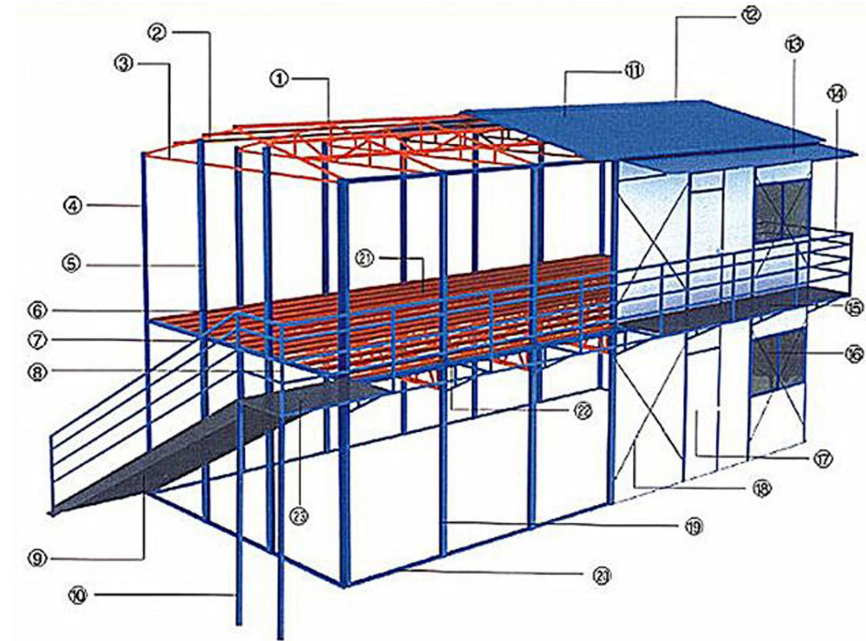
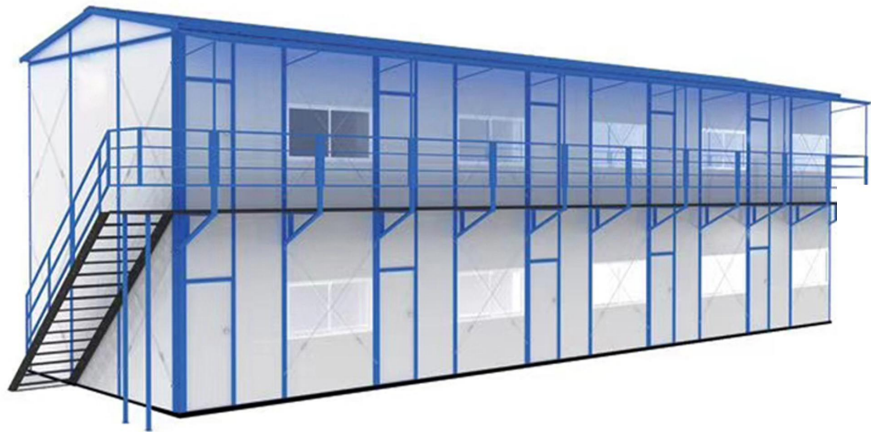


Advantages:

1. Easy to install : 25-30m² can be installed per day.
2. Easy to dissemble, anyone can dissemble a 40-50m² house in one day.
3. Service life: 30-50 years for one-time assembly, 30 years for at least 15 times assembly
4. It promotes a healthy and safe environment and the materials can be recycled
5. Competitive price, compared with conventional construction.
6. Light and reliable, the steel structure is strong and firm.
7. Good water proof, moisture proof, heat insulation and sound insulation capacity

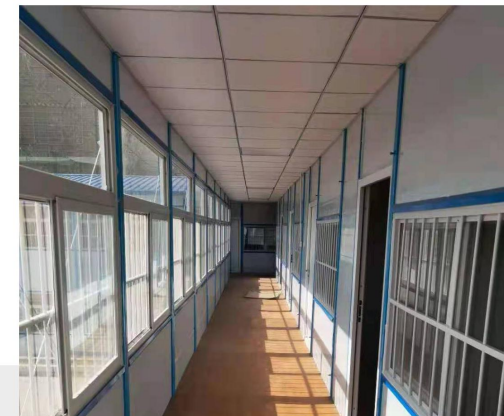


Prefab Container K or T



- | | | | |
|----------------------------|--------------------------|----------------------------|---------------------|
| ①Roof truss | ⑦Stair handrail | 13 awning | 19 Middle column |
| ②Roofing sandalwood strips | ⑧railing | 14 railing | 20 Ground beam |
| ③Ring beam | ⑨stairs | 15 Walkway board | 21 Floor beam |
| ④Corner post | ⑩Platform bracket column | 16 Aluminum sliding window | 22 Walkway bracket |
| ⑤Gable column | 11 Roof tile | 17 Compound door | 23 Platform bracket |
| ⑥Floor secondary beam | 12 Roof tiles | 18 Adjust the lever | |

Case



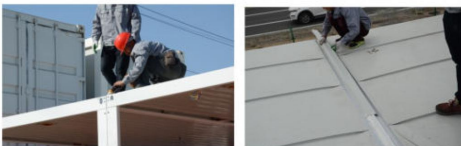
Installation process

Step 1 After the box room enters the site, place the base from the first floor according to the layout of the drawing (the built-in staircase base is different from other bases, and is marked on both sides of the box room at 3 meters). After the base is placed, start to install the four-corner corner posts (if an external walkway is used) The canopy needs to find the left and right holes of the column in advance and install it, and install the corridor support, the corner column installation, install the bottom hexagonal bolts, and then install the top. After the top installation is completed, tighten the upper and lower hexagonal bolts to complete the frame installation. Use white structural glue to fill the gap between the top and the top to prevent water from leaking into the room.



Step 2 Before the cabinets are merged and connected, all the holes on the hanging heads between the two cabinets are taped with butyl tape to prevent the rain from leaking into the room through the holes in the middle after the cabinets are connected.
Step 3 After the installation of the frame is completed, use 14*16 galvanized bolts to connect the whole layer of the frame at the hanging head.

Step 4 After the connection is completed, apply structural glue to the connection gap between the two cabinets at the top of the pass (the gap must be glued tightly, and there should be no leakage). After the glue is completed, install the pass waterproof fold (waterproof folds can only be used for structural glue, it is strictly forbidden to directly hit the top frame with the drill tail wire. If the drill tail wire is used to hit the top frame, the company will not be responsible for the leakage).



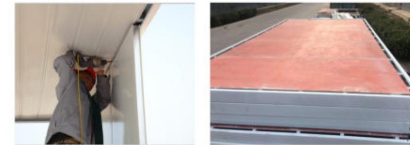
Step 5 After finishing the waterproofing, install the second-layer frame, install the same layer installation method, and complete the second-layer installation to perform the second-layer top waterproofing. All the joints of the box room should be waterproofed with structural glue (the glue must be tightened), and then the waterproof folding parts should be glued with structural glue. The box room with aisle box is also waterproofed with structural glue for the external connection of the box roof and the inside of the box room.
Step 6 After the installation is complete, glue the top and sides of all windows to waterproof the windows to prevent rainwater from flowing into the house from the gaps in the windows.

Step 7 The box room with power distribution has been designed and installed in the factory. The incoming industrial plug is a 5P plug (that is, 3 live wires, 1 neutral wire and 1 ground wire, and each wire must be connected according to the plug mark). The entire layer of power supply only needs to be connected to the power supply from one end, and the subsequent power supply only needs to be connected to each box. If you feel that there are too many electrical connections on the entire floor, and you want to connect to the power supply in batches, you must also connect 3 live wires, 1 neutral wire and 1 ground wire according to the plug markings. Pay special attention to a box room that cannot be connected to power on both sides at the same time. If both sides are connected to the power supply at the same time, it will cause the box room to short circuit and trip.



Step 8 In the two or three communication rooms, the light is controlled by a switch. After the power-on experiment is completed, the folding parts can be installed. Note that if you do not connect the wiring, you can only control the light of one box room.

Step 9 The box room with aisle box is easy to operate. There are switches on both sides of the stairway of each floor of the aisle box to control the corridor lights on both sides. The light line of the aisle box is set to leave a cable at the connection of each box. Before folding parts in the corridor, the wires must be connected and insulated, and the folding parts can be installed after the power-on experiment.



Step 10 When installing the composite board, it is necessary to pay attention to nailing the composite board to the frame to prevent the whole hoisting of heavy objects in the house from falling off the bottom.
Step 11 Choose to use the glass magnesium board as the ground structure board, pay attention to waterproof and moisture-proof, the glass magnesium board is easy to break when exposed to water, and pay attention to waterproof and moisture-proof.

Summary of Reasons for Rain Leakage in Box House

- 1) Drill holes, screws, or weld billboards on the roof and frame, causing holes on the roof to leak rain;
- 2) The joints are not glued inside and outside according to the operating requirements, but the joints of the cross-folding parts are installed with glue or the joints are not installed, and the joints will easily leak when the rain is heavy;
- 3) Use screws to install the joints of the cross-folding parts, causing the holes to leak;
- 4) The top of the box house is surrounded by a drainage ditch, and the vicinity of the drain pipe is blocked, causing the accumulated water on the top of the box house to not be discharged in time, causing rain leakage.

